

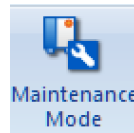
## Turn Off the Default Safety Playback Speed in MotoSim

### Introduction

Yaskawa's SMART Series of robots (HC10 and HC20) by default are set to safety speed for playback in MotoSim. To achieve the maximum speed of the robot, it is necessary to turn off the speed limiter.

### Turning off Safety Speed

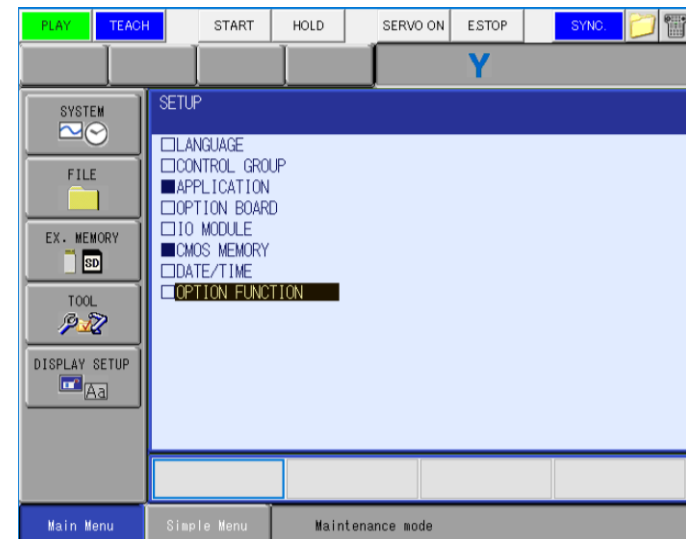
1. In the CONTROLLER Tab select MAINTENANCE MODE
  - a. The controller will reboot into Maintenance Mode.



2. Select SYSTEM/INITIALIZE

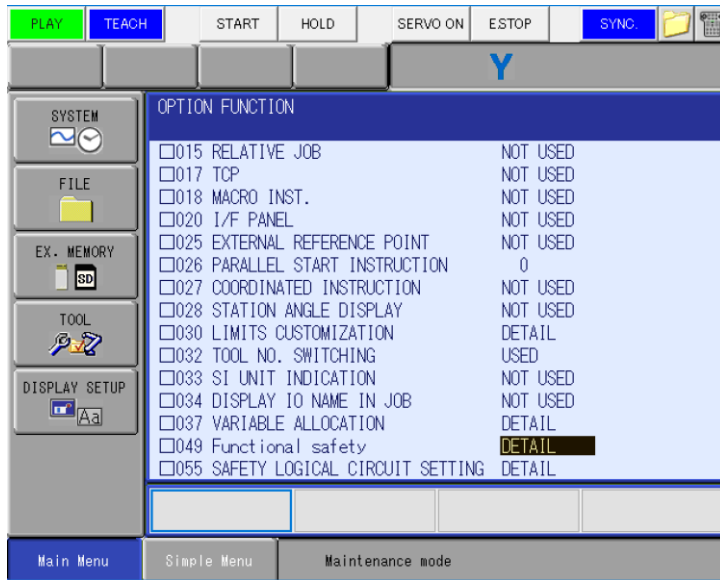


3. Scroll down and select OPTION FUNCTION

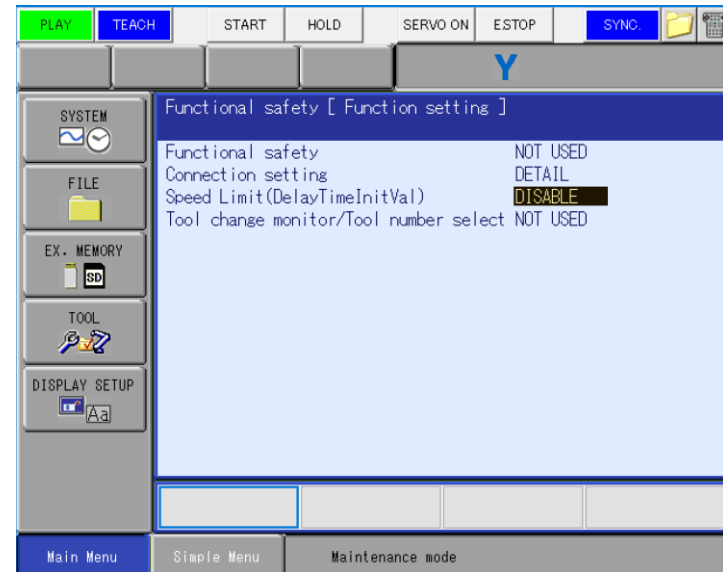


This document captures ideas, experiences, and informal recommendations from the Yaskawa Partner Support team. It is meant to augment – not supersede manuals or documentation from motoman.com. Please contact the Partner Support team at [partnersupport@motoman.com](mailto:partnersupport@motoman.com) for updates or clarification.

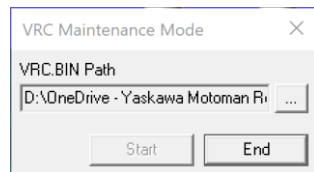
4. Scroll down to FUNCTIONAL SAFETY and select



5. Scroll down to "Speed Limit" and select DISABLE.



7. Select END to reboot the controller into normal mode.



6. Select YES to make the changes.

